



These are suitable for conductive liquids like water and for non-conductive liquids like Diesel/Oil. Models for either one level monitoring or two level monitoring.

MODELS

**WLC D1, Electrodes,
P1 LCW1,
S2 WLC1, P2 ALT1,
DLC D1 + FRKP 1,
FRKP 4**



FEATURES

- Can be used for potable water, water with impurities and for diesel/oil
- Cable size & length no restriction for water level monitoring
- Suitable for variety of electrodes
- Optical sensing for diesel/oil level monitoring
- Open collector output (for FRKP4)
- Choice of enclosures (DIN-Rail, & Plug-in,)
- Models with Micro-Controller based design
- Use of SMD Technology (S2 Series models)

FUNCTIONS

- Level monitoring of conductive and non-conductive liquids
- One level or two level monitoring
- One tank or two tank level monitoring

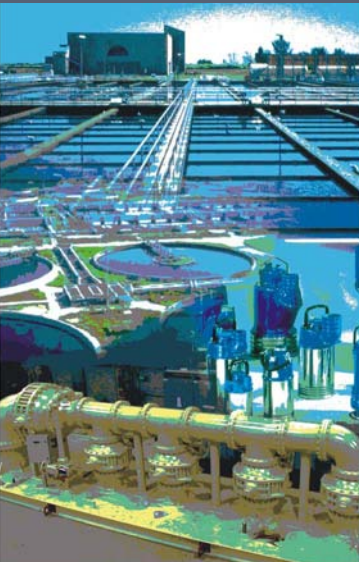
Ordering Instructions

- ✓ Product Family Name
- ✓ Model Name
- ✓ System Supply Voltage
- ✓ Aux. Supply/Control supply voltage
- ✓ Type of liquid & its specifications

LEVEL CONTROLLERS - CONDUCTIVE LIQUIDS

WLC D1

Water Level Control Relay Two Level Single Tank



Single tank - 2 level control relay, suitable for conductive liquids, sensitivity adjustment, 1CO output relay

P1 LCW1

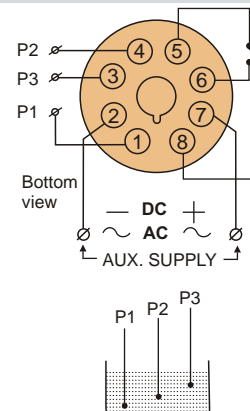
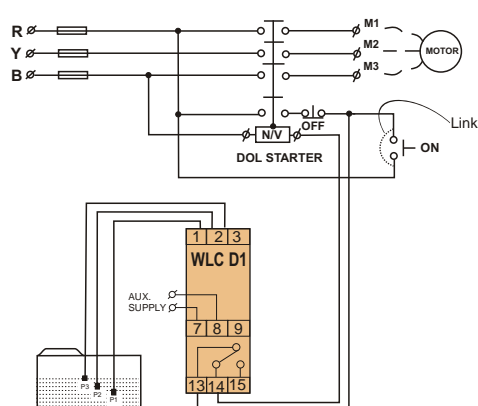
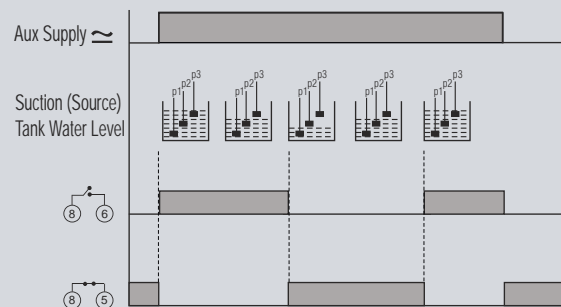
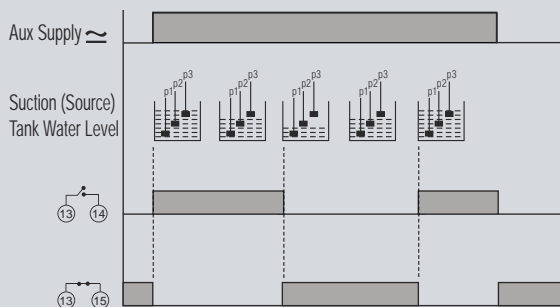
Water Level Control Relay Two Level Single Tank



Single tank - 2 level control relay, suitable for conductive liquids, 1CO output relay

Auxiliary Supply	12 VDC/24 VAC/DC/100-120/280-240/380-440 V AC \pm 10%, 50 / 60 Hz	24 /110 / 240 / 380 / 415 V AC \pm 10%, 50 / 60 Hz, 12 / 24 V DC
Output Contacts	1 CO	1 CO
Input Sensors	3 Electrodes	3 Electrodes
Sensitivity	1K - 200 K (adjustable)	N.A.
Trip Time Delay	Less than 1 sec	Less than 1 sec
Weight		
Unit	300 gms.	125 gms
Sensor (each)	50 gms.	50 gms
Dimensions (mm)		
Unit		
Overall (L x W x D)	76 x 30.5 x 117.5	50 x 40 x 80
Mounting (L x W)	68 centre to centre	8 - pin plug-in
Sensor		
Overall	24 (Dia) x 76 (L)	24 (Dia) x 76 (L)

Wherever not specified
Contact Rating :
5A @ 230 V AC (resistive)



Relay contact Applicable for suction Tank.

P2 LCW1

Water Level Control Relay Two Level Two Tanks

DISCONTINUED



Two tanks - 2 level control relay, suitable for conductive liquids, 1CO output relay

24 /110 / 240 / 380 / 415 V AC ±10%, 50 / 60 Hz, 12 / 24 V DC
1 CO
6 Electrodes
N.A.
Less than 1 sec
215 gms
50 gms
75 x 35 x 95
11- pin plug-in
24 (Dia) x 76 (L)

S2 WLC1



Single tank 2 level control relay, operates on 24 V AC supply, sensitivity adjustment, suitable for conductive liquids, 1CO output relay,

24 V AC / DC / 110 / 240 V AC ± 10%
1 CO
3 Electrodes
0 To 220 K (Continuous)
Less than 1 sec (Fixed)
200 gms.
50 gms.
90 x 35 x 60
35 MM Rail Mounting
24 (Dia) x 76 (L)

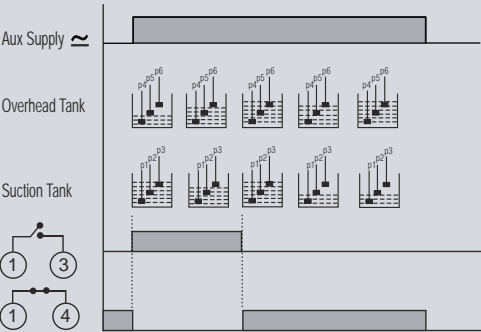
P2 ALT1

Alternating Relay

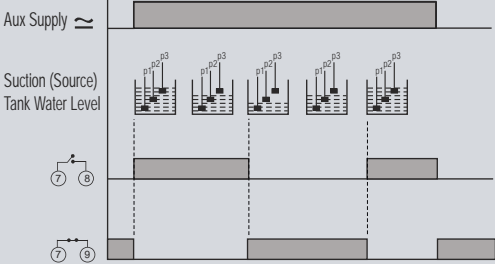


This is a simple 'Step Relay' to achieve alternating duty of two pumps or compressors. Operation of two pumps or compressors is achieved in alternating sequence as per either pressure switch or level control or thermostat contact. Product is available in 11 pin (P2) plug-in enclosure.

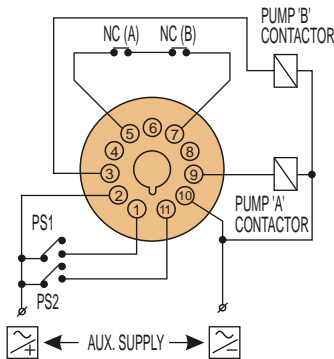
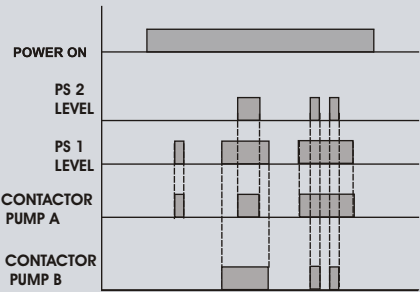
Aux Supply	110/220/230/240/380/415 V AC 24 V DC ± 15 %
Frequency	50 Hz / 60 Hz ±3%
Power Consumption	5 VA max.
Output Relay Contact	2 NO
Indication	
ON	Power ON (Green)
RLY	Relay ON (Red)
Operations	30 Operation/Min. (max.)
Dimensions (H x W x D)	85 x 35 x 90mm
Mounting	11 pin plug in base mounting
Weight	250 gms. (approx.)



Relay position as per suction/delivery logic condition



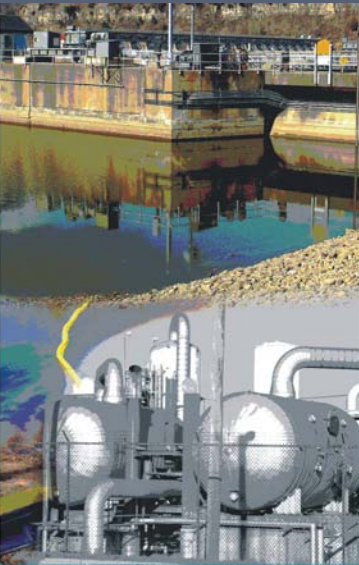
Relay position as per suction/delivery logic selection



LEVEL CONTROLLERS - NONCONDUCTIVE LIQUIDS

DLC D1 + FRKP 1

Diesel Level Control Relay Single Level



One level switch for diesel/oil, optical sensing principle,
1 CO output relay

FRKP 4

Diesel Level Sensor Switch Single Level



Either high level or low level switch
(selectable),
open collector output
Output suitable as input to PLC or
Controller

Auxiliary Supply	100-120/220-240/380-440 V AC / 24 V DC / AC, 12 V DC $\pm 10\%$	12 V / 24 V DC $\pm 10\%$
Output Contacts	1 CO	Open Collector 200 mA @ 24 V DC
Input Sensors	1 (FRK P1)	Built-in sensor
Sensitivity	N. A.	N. A.
Trip Time Delay	Less than 5 sec	Less than 1 sec
Weight		
Unit	300 gms.	—
Sensor (each)	100 gms.	100 gms
Dimensions (mm)		
Unit		
Overall (L x W x D)	76 x 30.5 x 117.5	—
Mounting (L x W)	68 centre to centre	—
Sensor		
Overall	18 (Dia) x 75 (L)	18 (Dia) x 75 (L)

