



- ▷ CONSULTING ENGINEER
- ▷ CONTROL PANEL MANUFACTURER
- ▷ CONTROL SYSTEM INTEGRATOR
- ▷ PLANT SHIFTING & REVAMPING
- ▷ DOMESTIC & GLOBAL PRESENCE
- ▷ E-COMMERCE FOR INDUSTRIAL PRODUCTS


SUCHI VIEW

- ENGINEERING TECHNOLOGY EXPERTS
- PROCESS AUTOMATION & INTERFACE EXPERTS



LOG IN SCREEN

|| सूचि View || Log In



|| सूचि View ||
A Logger Monitoring System

Sign In

User Name:

Pass Word:

Show Password

Log In

HOME PAGE

WELCOME

03-08-25 11:11:46

AUTOCON[®]
Consulting Engineer for Process Automation

|| **SUCHI VIEW** ||
A Logger Monitoring System

Designed By:
AUTOCON INSTRUMENTS,
Bhavnagar

MANAGE USERS
DASH BOARD
SYSTEM SETUP
PARAMETER
LOG OUT
TURN OFF

DASH BOARD

DASHBOARD PAGE

03-08-25 11:11:56

DATA LOG ALARM LOG

Channel	Process Value	Alarm 1 SP	Alarma 1 STS	Alarm 2 SP	Alarm 2 STS	Action
1 CHANNEL 1	OPEN	OPEN	OPEN	OPEN	OPEN	
2 CHANNEL 2	OPEN	OPEN	OPEN	OPEN	OPEN	
3 CHANNEL 3	OPEN	OPEN	OPEN	OPEN	OPEN	
4 CHANNEL 4	OPEN	OPEN	OPEN	OPEN	OPEN	
5 CHANNEL 5	OPEN	OPEN	OPEN	OPEN	OPEN	
6 CHANNEL 6	OPEN	OPEN	OPEN	OPEN	OPEN	
7 CHANNEL 7	OPEN	OPEN	OPEN	OPEN	OPEN	
8 CHANNEL 8	OPEN	OPEN	OPEN	OPEN	OPEN	

MANAGE USERS
DASH BOARD
SYSTEM SETUP
PARAMETER
LOG OUT
TURN OFF

ALARM PAGE

VIEW
ALARM LOG PAGE
AUTOCON

03-08-25
11:14:59

Start Date:

End Date:

Export Data
Delete Data

	date	time	channel	process_value	alarm_no	alarm_sts	led_sts	do_sts
1	2025-03-03	16:13:39	CH2	OPEN	Alarm 1	ON	ON	OFF
2	2025-03-03	16:13:39	CH4	OPEN	Alarm 1	ON	ON	OFF
3	2025-03-03	16:13:39	CH2	OPEN	Alarm 1	ON	ON	OFF
4	2025-03-03	16:13:39	CH4	OPEN	Alarm 1	ON	ON	OFF
5	2025-03-03	16:13:39	CH2	OPEN	Alarm 1	ON	ON	OFF
6	2025-03-03	16:13:39	CH4	OPEN	Alarm 1	ON	ON	OFF
7	2025-03-03	16:12:44	CH2	OPEN	Alarm 2	ON	OFF	OFF
8	2025-03-03	16:12:44	CH4	OPEN	Alarm 2	ON	OFF	OFF
9	2025-03-03	16:12:44	CH6	OPEN	Alarm 2	ON	OFF	OFF
10	2025-03-03	16:12:44	CH2	OPEN	Alarm 2	ON	OFF	OFF
11	2025-03-03	16:12:44	CH4	OPEN	Alarm 2	ON	OFF	OFF
12	2025-03-03	16:12:44	CH6	OPEN	Alarm 2	ON	OFF	OFF
13	2025-03-03	16:12:44	CH2	OPEN	Alarm 2	ON	OFF	OFF
14	2025-03-03	16:12:44	CH4	OPEN	Alarm 2	ON	OFF	OFF
15	2025-03-03	16:12:44	CH6	OPEN	Alarm 2	ON	OFF	OFF

LOG OUT
TURN OFF

HISTORY PAGE

VIEW
DATALOG PAGE
AUTOCON

03-08-25
11:14:30

Start Date:

End Date:

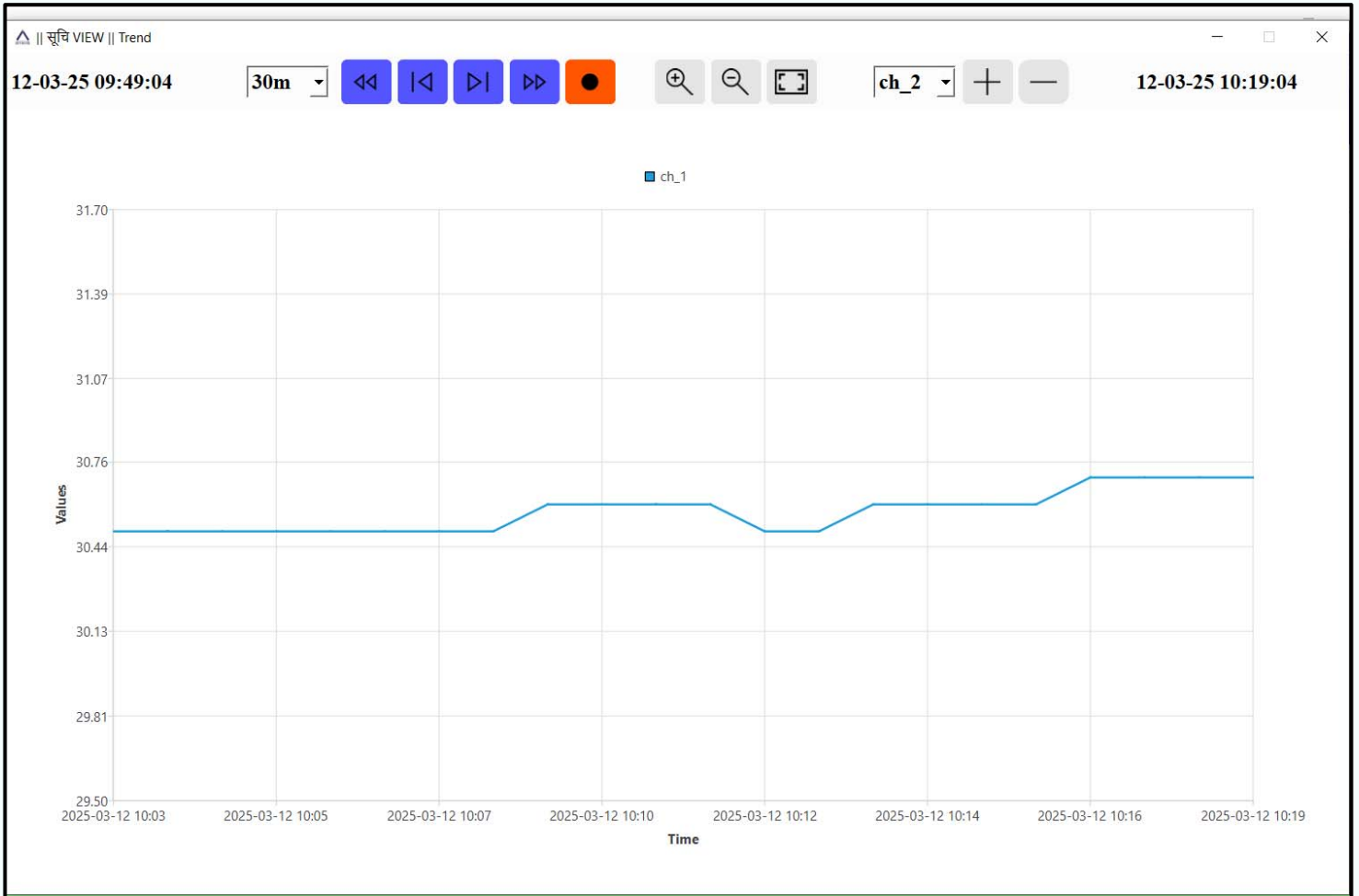
Export Data
Delete Data

Scanner SCN1 not connected

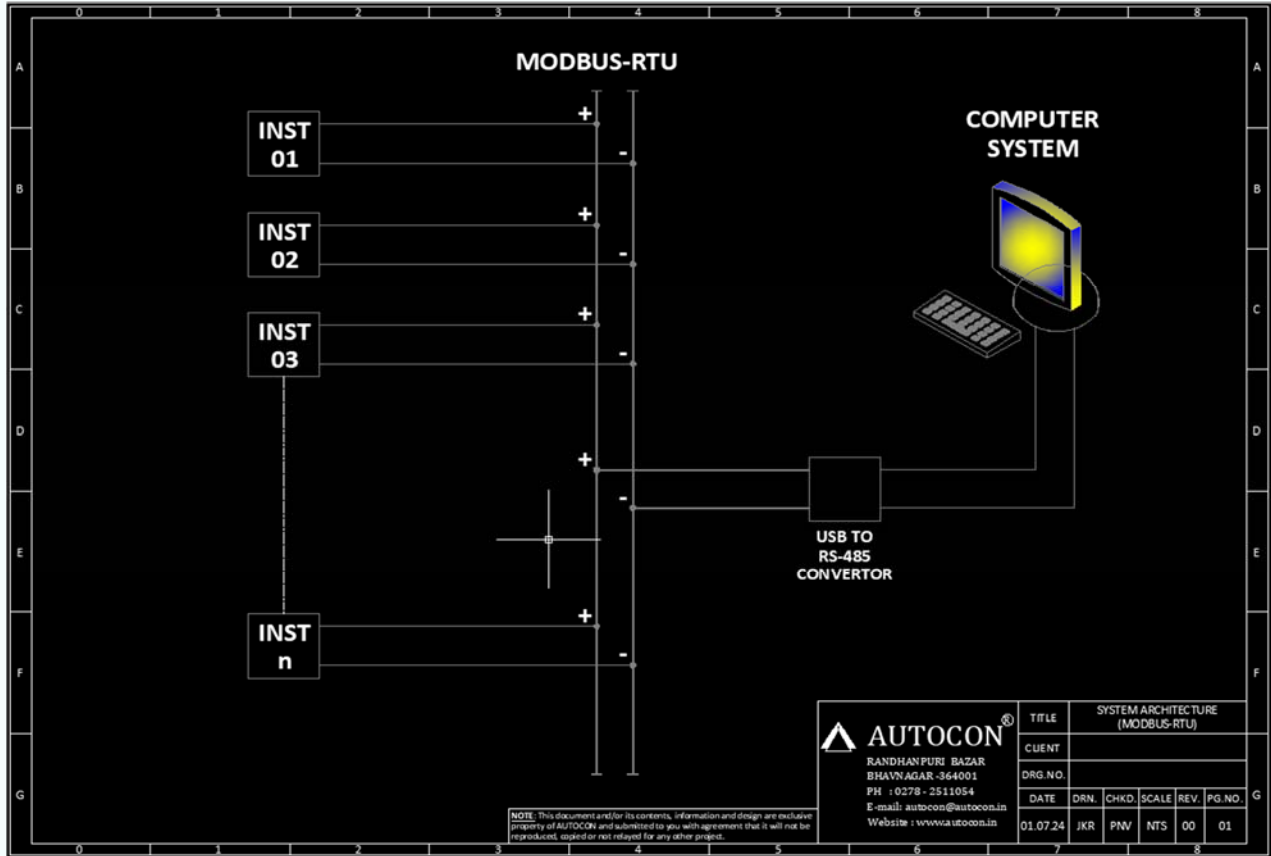
	date	time	ch_1	ch_2	ch_3	ch_4	ch_5	ch_6	ch_7
1	2025-03-12	10:19:04	30.7	OPEN	Chanel Skip	OPEN	OPEN	OPEN	OPEN
2	2025-03-12	10:18:19	30.7	OPEN	Chanel Skip	OPEN	OPEN	OPEN	OPEN
3	2025-03-12	10:17:34	30.7	OPEN	Chanel Skip	OPEN	OPEN	OPEN	OPEN
4	2025-03-12	10:16:49	30.7	OPEN	Chanel Skip	OPEN	OPEN	OPEN	OPEN
5	2025-03-12	10:16:04	30.6	OPEN	Chanel Skip	OPEN	OPEN	OPEN	OPEN
6	2025-03-12	10:15:19	30.6	OPEN	Chanel Skip	OPEN	OPEN	OPEN	OPEN
7	2025-03-12	10:14:34	30.6	OPEN	Chanel Skip	OPEN	OPEN	OPEN	OPEN
8	2025-03-12	10:13:49	30.6	OPEN	Chanel Skip	OPEN	OPEN	OPEN	OPEN
9	2025-03-12	10:13:04	30.5	OPEN	Chanel Skip	OPEN	OPEN	OPEN	OPEN
10	2025-03-12	10:12:19	30.5	OPEN	Chanel Skip	OPEN	OPEN	OPEN	OPEN
11	2025-03-12	10:11:34	30.6	OPEN	Chanel Skip	OPEN	OPEN	OPEN	OPEN
12	2025-03-12	10:10:49	30.6	OPEN	Chanel Skip	OPEN	OPEN	OPEN	OPEN
13	2025-03-12	10:10:49	30.6	OPEN	Chanel Skip	OPEN	OPEN	OPEN	OPEN
14	2025-03-12	10:10:04	30.6	OPEN	Chanel Skip	OPEN	OPEN	OPEN	OPEN
15	2025-03-12	10:09:19	30.6	OPEN	Chanel Skip	OPEN	OPEN	OPEN	OPEN
16	2025-03-12	10:08:34	30.5	OPEN	Chanel Skip	OPEN	OPEN	OPEN	OPEN
17	2025-03-12	10:07:49	30.5	OPEN	Chanel Skip	OPEN	OPEN	OPEN	OPEN
18	2025-03-12	10:07:04	30.5	OPEN	Chanel Skip	OPEN	OPEN	OPEN	OPEN
19	2025-03-12	10:06:19	30.5	OPEN	Chanel Skip	OPEN	OPEN	OPEN	OPEN

LOG OUT
TURN OFF

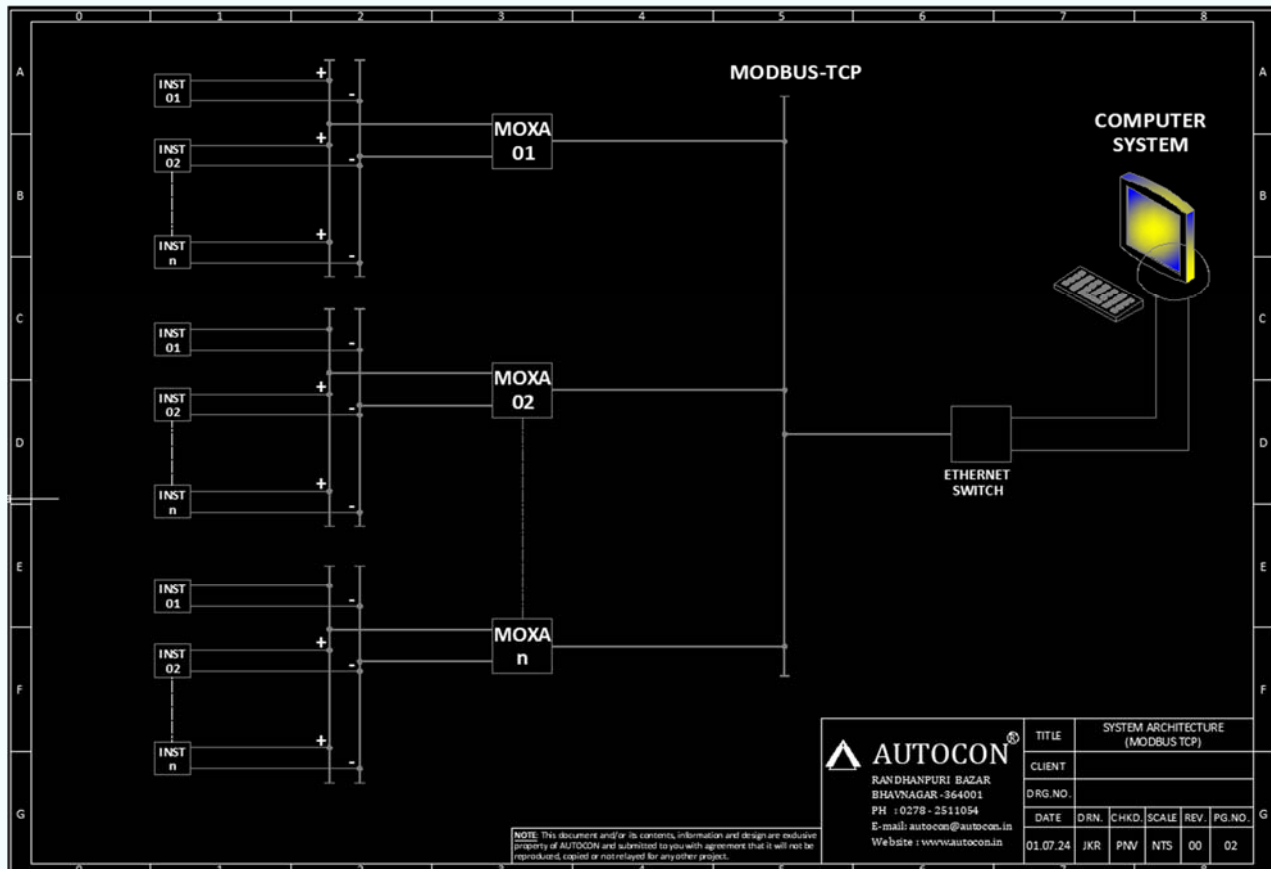
REAL TIME GRAPH



SYSTEM ARCHITECTURE (MODBUS - RTU)



SYSTEM ARCHITECTURE (MODBUS - TCP)



SPECIFICATIONS

- A SCADA application to read and store data from industrial data logger as well as industrial data scanner devices.
- Reads from internal memory of logger and stores at local machine
- Live logging is available for both logger and scanner devices at local machine
- 2-Alarm Set point with Alarm logging facility
- Live as well as historical graph viewing facility
- Multi-channel graph comparison
- Can be configure for 8/16/32 channel devices
- Multiple devices can be connected at the same time (device must be of same type, either logger or scanner, no of channels can be vary)
- Data storage up to 85000 lines per table
- .csv data export for data log and alarm log
- Mode of communication :
 1. MODBUS-RTU
 2. MODBUS-TCP
 3. ETHERNET

For Detailed information about Autocon, please visit our website:

www.autocon.in

For Online purchase of Industrial Products, please visit our Ecommerce website:

www.autocon.biz



AUTOCON INSTRUMENTS (Estd.in Jan - 1996)

Head Office (Bhavnagar)

1st Floor, Vora Building, Radhanpuri Bazaar, Bhavnagar - 364 001 Gujarat, India.

Phone : (0) +91-278-2511054 • Mobile : +91-9825154002

E-mail: autocon@autocon.in • **Website:** www.autocon.in • **E-Commerce Website:** www.autocon.biz

Branch Office (Vadodara)

905. Dwarkesh Complex, B/s Hotel Welcome, R C Dutt Road, Vadodara-390 007, Gujarat, India

E-mail: baroda@autocon.in

