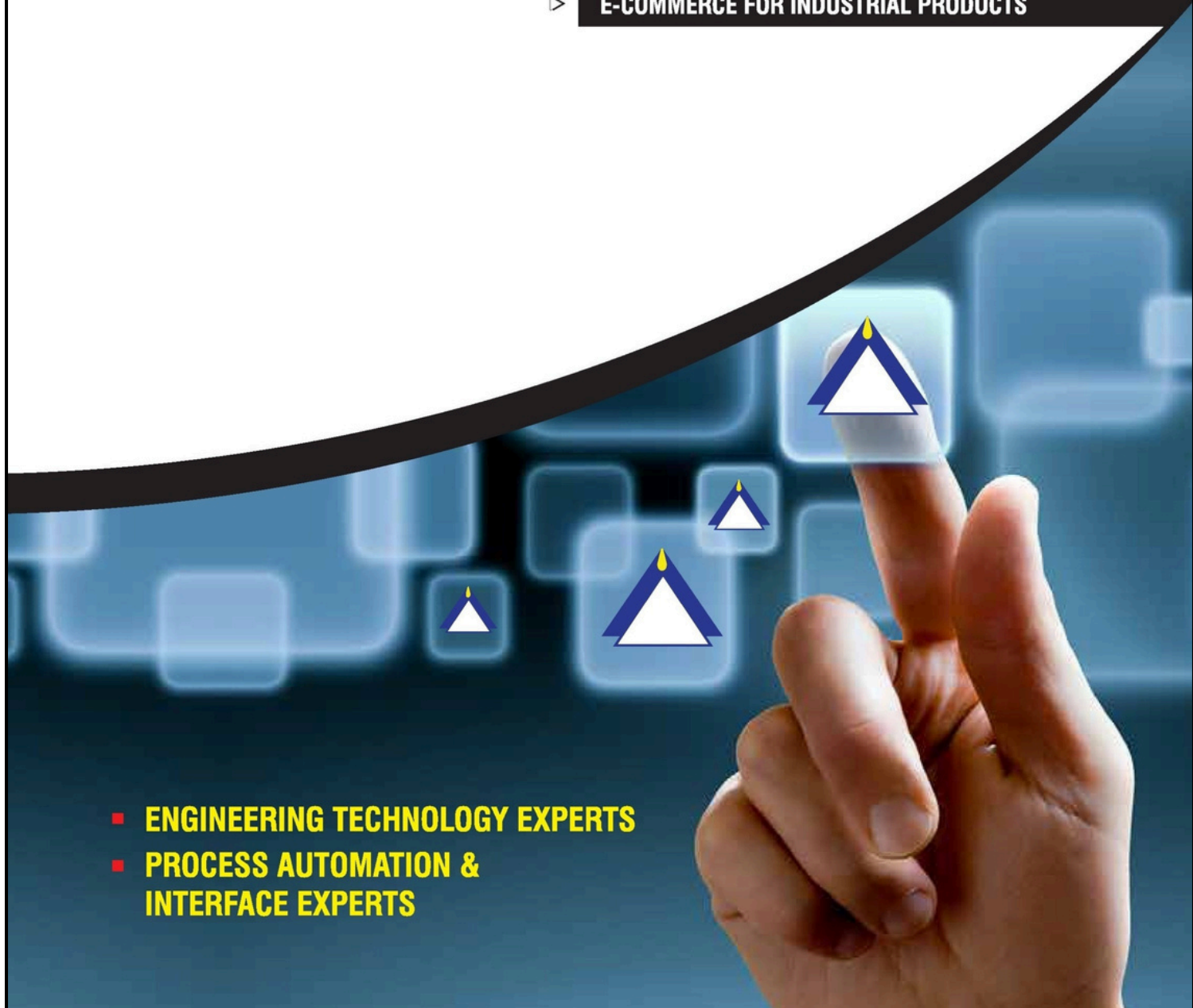




- ▷ CONSULTING ENGINEER
- ▷ CONTROL PANEL MANUFACTURER
- ▷ CONTROL SYSTEM INTEGRATOR
- ▷ PLANT SHIFTING & REVAMPING
- ▷ DOMESTIC & GLOBAL PRESENCE
- ▷ E-COMMERCE FOR INDUSTRIAL PRODUCTS

- ENGINEERING TECHNOLOGY EXPERTS
- PROCESS AUTOMATION & INTERFACE EXPERTS

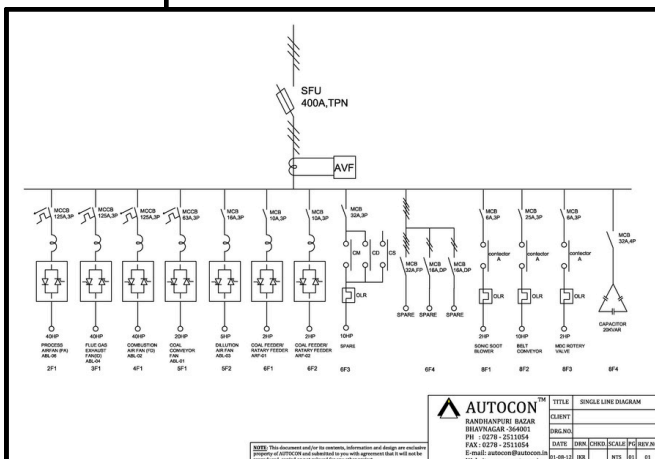


INSTRUMENTATION & AUTOMATION

- Process study and P & ID Preparation
- Process Instrumentation & Automation
- Specification Generation
- Layout & Routing, Control Room Designing
- Procurement Support
- Guideline for Execution
- Supervision for installation & Project execution.
- Pre-Commission & commissioning Activities
- Installed & Commissioned more than 500 PID/Close Loops
- design & Commissioned Control System from 24 I/O & up to 1800 I/O.



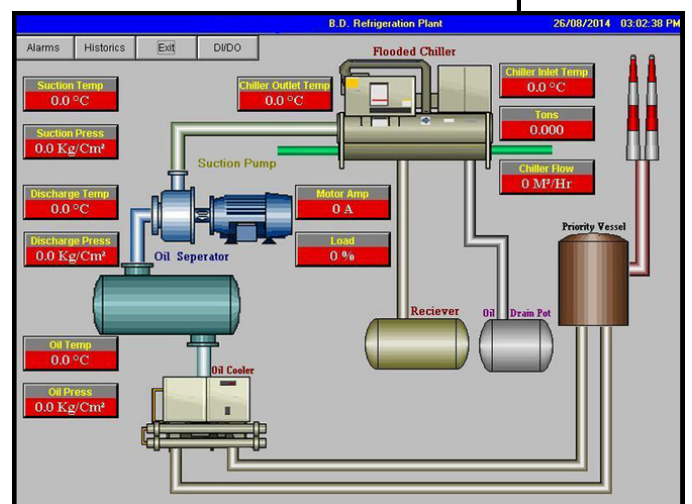
ELECTRICAL ENGINEERING



- Single Line Diagram
- Load Distribution and specs generation
- Layout & Routing, Panel room design
- Tender Document Generation
- Supervision & Inspection for execution & Commissioning
- Energy Conservation job
- Executed job from 300 kVA Tx to 1800 kVA Tx

AUTOMATION & CONTROL SYSTEM INTEGRATOR

- SCADA & PLC Programming
- Loop Designing & Execution
- Solution provider for Automation
- Automation for Inorganic Process Control
- Heat Treatment Furnace profile control
- Development for Control System of Imported Machines
- Single Point/Multi point Control
- Reports for historical parameters & batch
- Various Communication Protocols
- Alarms & Report Management
- Open Database Connectivity
- Data recording for industrial Inputs/Outputs



ENERGY MONITORING SYSTEM - URJAVIEW

- Communication : Modbus-RTU/Modbus TCP (Either)
- Optional Feature : Cloud View for Data
- Operating System : Linux / Windows 10 or Higher Versions
- System Requirements : 4 GB or More RAM
- Manual Data Export (.csv Format)
- Auto Data Export Day Wise/Shift Wise (As per Demand)
- Data Backup up to 6 to 9 Months
- Alarm Message Generation as per Requirement
- Individual & Group Report Gen. as per Application demands



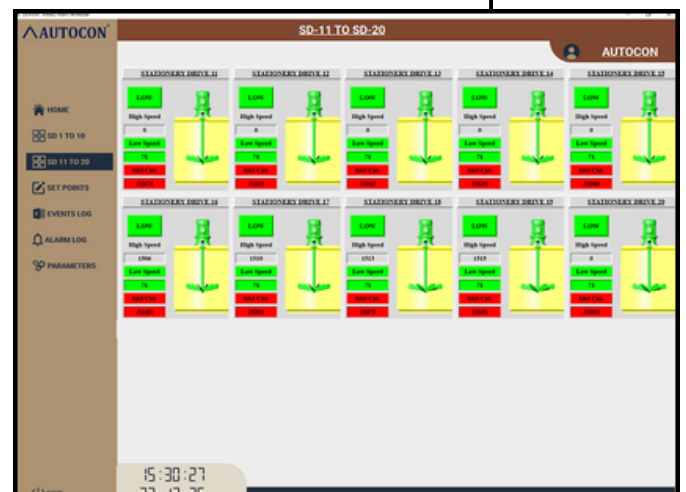
LOGGER MONITORING SYSTEM - SUCHIVIEW



- Read and Store data from Industrial Data Logger/Scanner
- Reads from memory of logger and stores at local machine
- Live logging is available from both Logger & Scanner
- 2-Alarm set point with Alarm logging facility
- Multi-channel graph comparison
- Can be configure for 8/16/32 channel devices
- Data storage up to 85000 lines per table
- .csv data export for data log and alarm log
- Mode of Commu. : MODBUS-RTU/MODBUS-TCP/ETHERNET

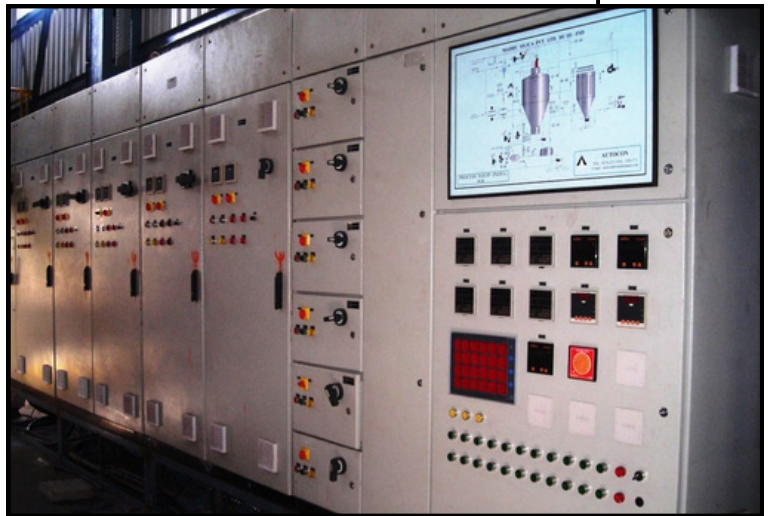
PLANT MONITORING SYSTEM - EVENTVIEW

- Logs for Power On and Off time of given Machine
- Logs for Machine wise every operation cycle with cycle time
- Operations will be log with Machine Operators name
- Logs for number of cycles/machine with total cycle time
- Generates Day/Shift wise detailed and brief report
- Useful to monitor & conclude Indi. Machine's Performance
- Useful to monitor & conclude Indi. Operator's Performance
- Useful for Work Planning
- Accessories PLC Panel + Computer with Windows
- Operating Voltage : 230VAC
- Communication Protocol : Modbus TCP



PANEL MANUFACTURER

- MIMIC Panel
- PLC Panel
- VFD Panel
- VFD Panel with S/D & DOL bypass facility
- Control Panel with discrete controllers
- Electrical Panel like MCC, PCC, Indoor Panel, Outdoor Panel
- Instruments Work Station



TRADING ACTIVITY



- All kind of instruments related to automation & panel control
- All type of MCB, MCCB, SFU, Wires & Cables, Relays, Variable Frequency Drives (VFD), PLC.
- Level Transmitter like Radar, Ultrasonic, Vibronics
- Measuring Instruments for Pressure, Flow & Temperature
- Temperature sensor/Switches, T/C, Resistance Thermometer
- Instruments for Liquid Analysis, Density & Concentration

E-COMMERCE

- Website : www.autocon.biz
- Ecommerce for Industrial / Technical Products
- Transparent & Reliable Platform
- Reliable Partners for Payment & Logistics
- Various user friendly Payment methods like Credit / Debit Card, Net Banking, Paytm, COD etc...



E-COMMERCE



FLAMEPROOF INSTRUMENTS

- Flameproof Enclosures - Suitable for Hazardous Areas
- Can be used in Corrosive Areas also
- Used in Chemicals, Oil, Pharma & other companies
- Flexible to Install any standard Brand / size Instruments i.e. 48 × 48 (mm), 48 × 96 (mm), 96 × 96 (mm)



VARIOUS KIND OF INSTRUMENTATION TESTING & CALIBRATION SYSTEM



- Various PLC/SCADA based systems for Actuated On/Off Valve Control Valve
- Useful for all Valve Manufacturing Industries
- 7 HMI for Operation
- Facility to Connect and Calibrate 4 nos. of XV at a time
- Facility to Enter Tag nos. for XV.
- Open/Close Time for XV with respect to given Air Operation
- Facility to generate a separate Test & calibration report



AUTOCON INSTRUMENTS

Head Office (Bhavnagar)

1st Floor, Vora Building, Randhanpuri Bazar, Bhavnagar - 364001, Gujarat, India.

Phone : (0) +91-278-2511054, Mobile : +91- 9825154002

Email : autocon@autocon.in, Website : www.autocon.in, E-Commerce Website : www.autocon.biz

Branch Office (Vadodara)

905, Dwarkesh Complex, B/S Hotel welcome, R C Dutt Road, Vadodara - 390007, Gujarat, India.

